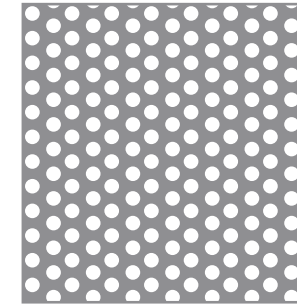
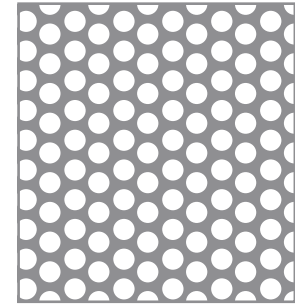


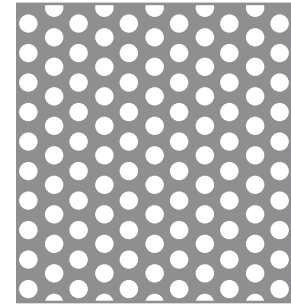
613



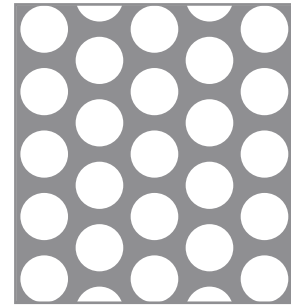
82



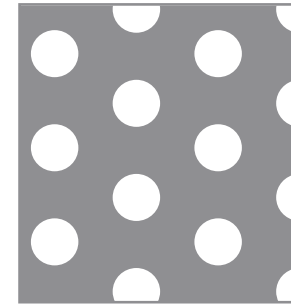
127



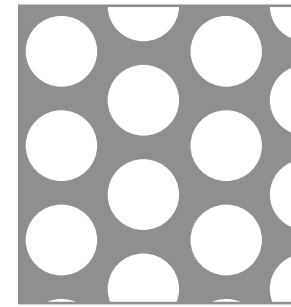
109



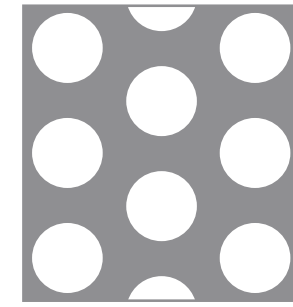
214



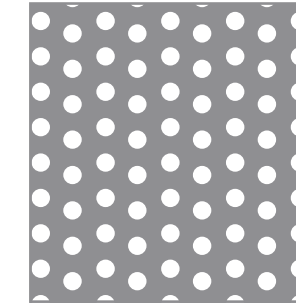
600



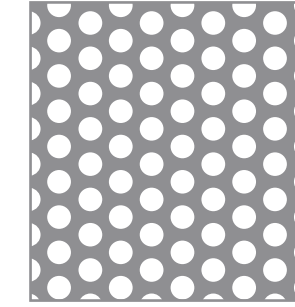
249



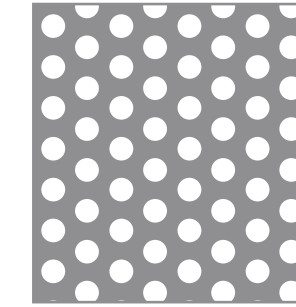
252



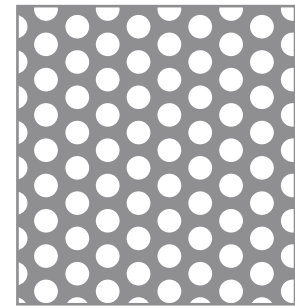
668



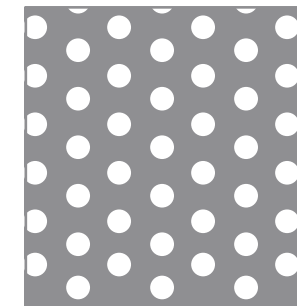
1614



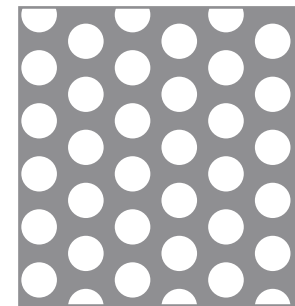
951



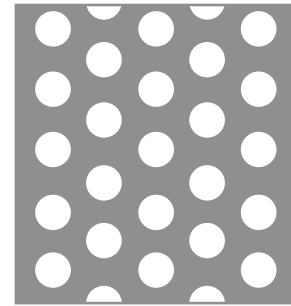
1614



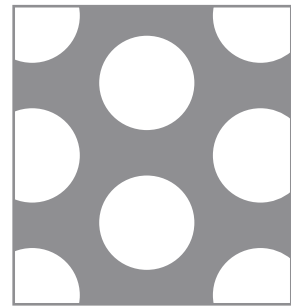
2136



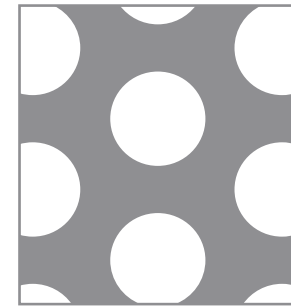
694



467



273



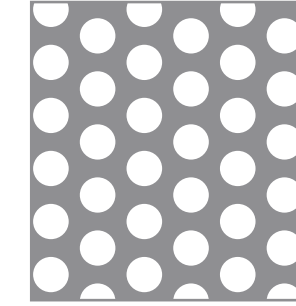
497



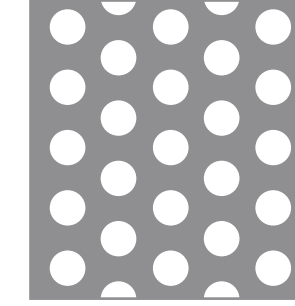
285



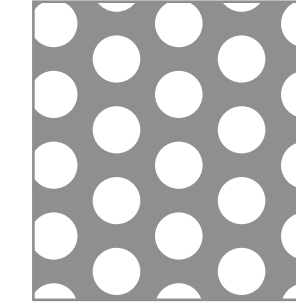
1024



694



467



567

Actual Size

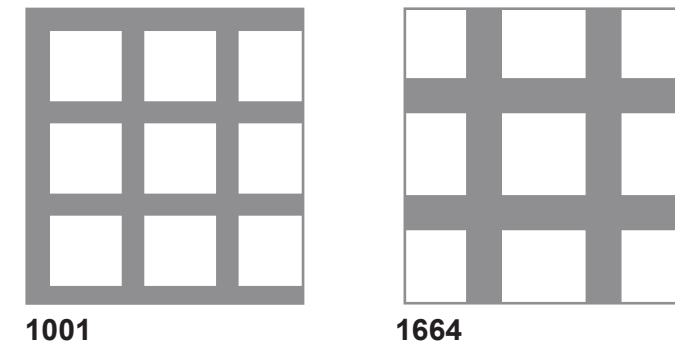
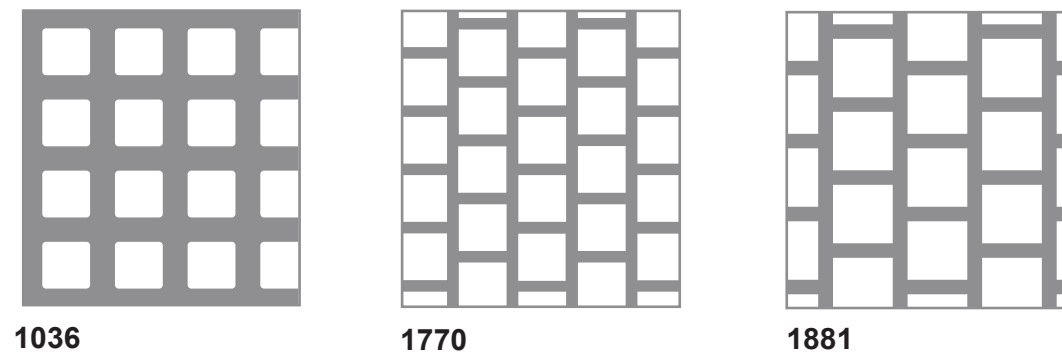
Actual Size

Actual Size

| PATTERN NUMBER | HOLE DIA (mm) | PITCH (mm) | % OPEN AREA | 2m x 1m STOCKED THICKNESS (mm) | 2.5m x 1.25m STOCKED THICKNESS (mm) | MATERIAL |
|----------------|---------------|------------|-------------|--------------------------------|-------------------------------------|------------|
| 613 | 1.60 | 2.84 | 28 | 1.2 / 1.5 | - | Mild Steel |
| 82 | 1.96 | 3.07 | 36 | 1.2 | - | Mild Steel |
| 127 | 2.84 | 3.80 | 50 | 1.2 / 1.5 | - | Mild Steel |
| 109 | 2.46 | 3.97 | 36 | 0.9 / 1.2 / 1.5 | - | Mild Steel |
| 1614 | 3.17 | 4.75 | 40 | 0.9 / 1.2 / 1.5 | - | Mild Steel |
| 2136 | 3.17 | 6.35 | 23 | - | 3.0 | Mild Steel |
| 694 | 4.75 | 7.14 | 40 | 0.9 / 1.2 | - | Mild Steel |
| 467 | 4.75 | 7.93 | 32 | 1.5 / 3.0 | 1.5 / 3.0 | Mild Steel |

| PATTERN NUMBER | HOLE DIA (mm) | PITCH (mm) | % OPEN AREA | 2m x 1m STOCKED THICKNESS (mm) | 2.5m x 1.25m STOCKED THICKNESS (mm) | MATERIAL |
|----------------|---------------|------------|-------------|--------------------------------|-------------------------------------|------------|
| 214 | 6.35 | 8.71 | 47 | 1.2 / 1.5 | 1.2 / 1.5 | Mild Steel |
| 567 | 6.35 | 9.53 | 40 | 0.9 / 1.2 / 2.0 / 3.0 | 3.0 | Mild Steel |
| 600 | 6.35 | 12.70 | 23 | 6.0 | 6.0 | Mild Steel |
| 249 | 9.53 | 12.70 | 50 | 1.5 | - | Mild Steel |
| 252 | 9.53 | 14.27 | 40 | - | 2.0 / 3.0 / 5.0 | Mild Steel |
| 273 | 12.70 | 17.46 | 47 | 1.5 / 2.0 | - | Mild Steel |
| 497 | 12.70 | 19.05 | 40 | 3.0 / 6.0 | - | Mild Steel |
| 285 | 22.20 | 27.00 | 61 | - | 3.0 | Mild Steel |
| 1024 | 25.40 | 34.90 | 48 | - | 6.0 | Mild Steel |
| 951 | 3.17 | 5.33 | 32 | - | 1.5 | Mild Steel |

| PATTERN NUMBER | HOLE DIA (mm) | PITCH (mm) | % OPEN AREA | 2m x 1m STOCKED THICKNESS (mm) | 2.5m x 1.25m STOCKED THICKNESS (mm) | MATERIAL |
|----------------|---------------|------------|-------------|-----------------------------------|-------------------------------------|---------------|
| 668 | 2.46 | 4.75 | 24 | - | 0.7 / 1.2 | Pre-Galv |
| 1614 | 3.17 | 4.75 | 40 | 1.2 | - | Aluminium |
| 694 | 4.75 | 7.14 | 40 | 1.2 | - | Aluminium |
| 1614 | 3.17 | 4.75 | 40 | 1.5 | - | S/S 304 |
| 951 | 3.17 | 5.33 | 32 | 0.9 / 1.2 | 0.7 / 1.0 / 1.5 | S/S 304 / 316 |
| 467 | 4.75 | 7.93 | 32 | 1.2 | - | S/S 304 |
| 567 | 6.35 | 9.53 | 40 | 1.2 / 2.0 | - | S/S 304 |
| PATTERN NUMBER | HOLE DIA (mm) | PITCH (mm) | % OPEN AREA | 3m x 1.25m STOCKED THICKNESS (mm) | 2.5m x 1.25m STOCKED THICKNESS (mm) | MATERIAL |
| 951 | 3.17 | 5.33 | 32 | 0.7 | 0.7 | MS / Pre-Galv |



Actual Size

| PATTERN NUMBER | HOLE SIZE (mm) | PITCH (mm) | % OPEN AREA | 2m x 1m STOCKED THICKNESS (mm) | MATERIAL |
|----------------|----------------|------------|-------------|--------------------------------|------------|
| 1036 | 6.35 | 9.53 | 44 | 1.2 | Mild Steel |
| 1770 | 6.35 | 7.92 | 64 | 1.2 | Mild Steel |
| 1881 | 7.93 | 9.90 | 64 | 1.2 | Mild Steel |
| 1001 | 9.53 | 12.70 | 56 | 1.2 | Mild Steel |
| 1664 | 11.10 | 15.87 | 49 | 1.2 | Mild Steel |



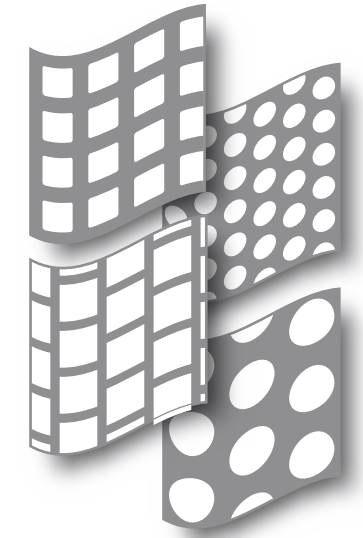
Availability • Quality • Service • Experience

APW Ltd are a major UK manufacturer of perforated products. Our perforated stock range includes a variety of patterns, materials and sheet sizes. All stock sheets are available for immediate delivery providing you with an efficient, high quality service.

How to Order / Request a Quotation

1. Choose the pattern(s) of your choice.
2. Decide on the quantity you require.
3. Choose a material and any additional finish.
4. Send your enquiry to the Stock Sales Team.

t: 01925 295577 f: 01925 295588 e: sales@apw.co.uk w: www.apw.co.uk



Stock Range

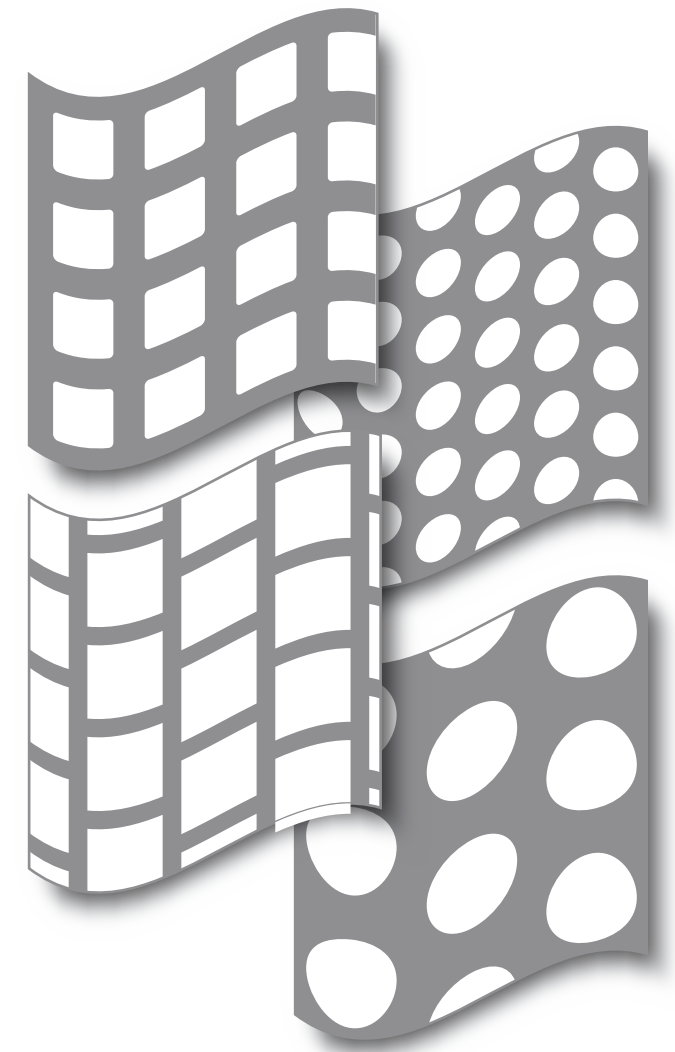


Unit 12 Deacon Trading Estate
Earle Street
Newton Le Willows
Merseyside WA12 9XD

Tel: 01925 295577
Fax: 01925 295588
Email: sales@apw.co.uk
www.apw.co.uk

APW reserve the right to amend the Stock Range and specifications without prior notice

| | |
|----------------------|------------------|
| Uniclass L66:N171 | EPIC F52:Y141 |
| CI/SfB | R (G7) |



Stock Range

2010 The UK's Leading Independent Manufacturer of Perforated Products sales@apw.co.uk www.apw.co.uk