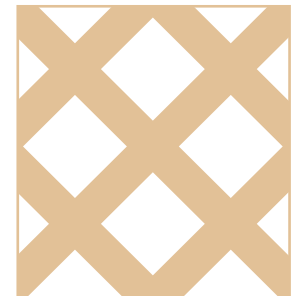


SML DIAMOND - 9534



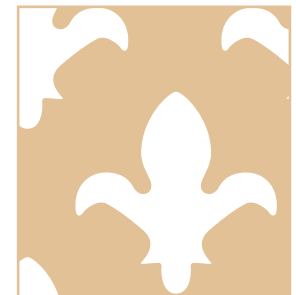
SQ. DIAMOND - 9323



LATTICE - 9535



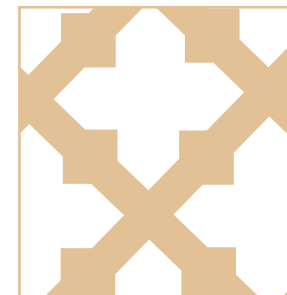
MINI REGENCY - 9536



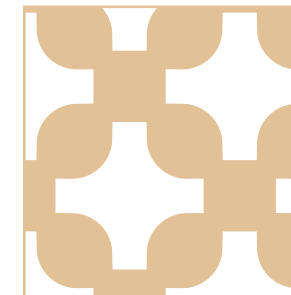
REGENCY - 9537



FILIGREE - 9538



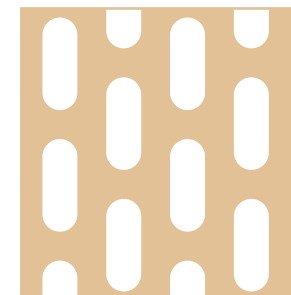
ROMAN - 1317



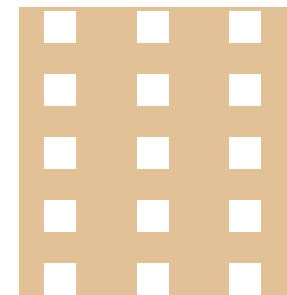
GOTHIC - 9539



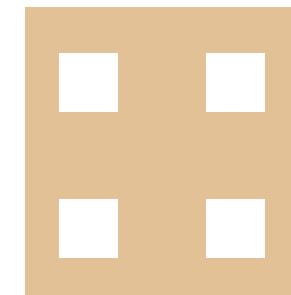
VENUS - 9530



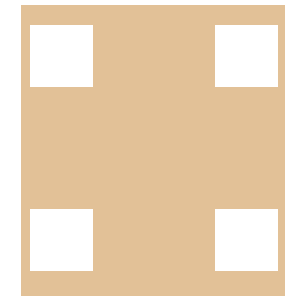
TORPEDO - 9529



MILAN - 9533



TUSCANY - 9531



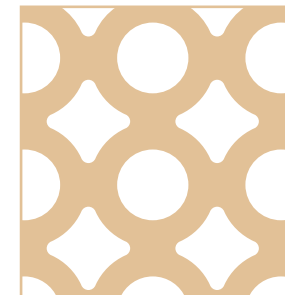
VIENNA - 9532



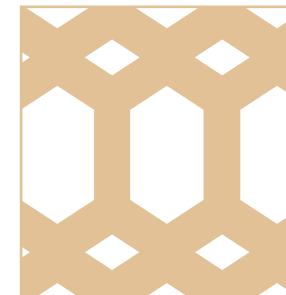
GRECIAN - 9540



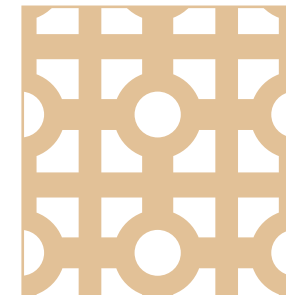
MOSAIC - 9541



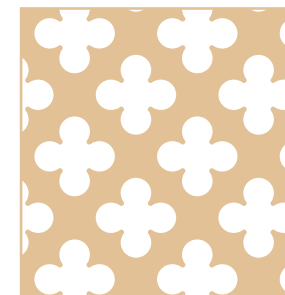
LONGTON - 9542



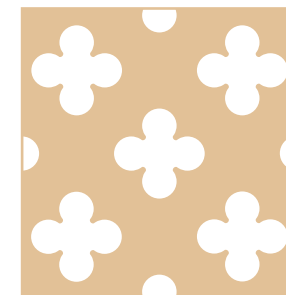
TUNIS - 2071



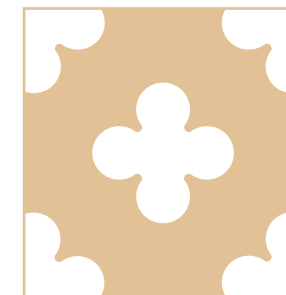
MOROCCAN - 9543



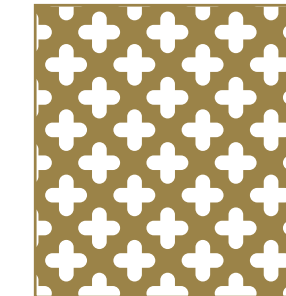
MINI CLOVER - 9325



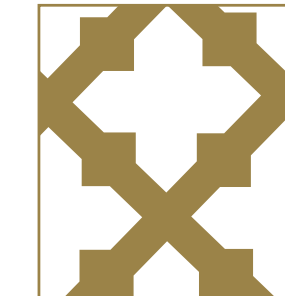
SMALL CLOVER - 989



LARGE CLOVER - 9545



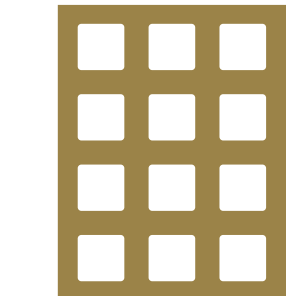
379



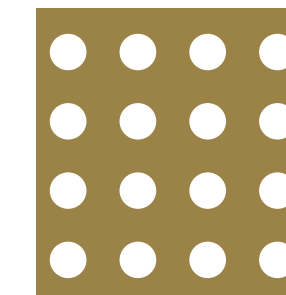
1317



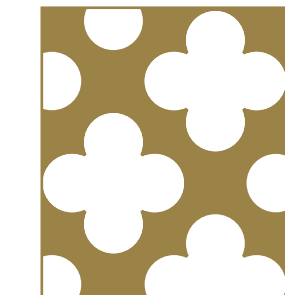
1280



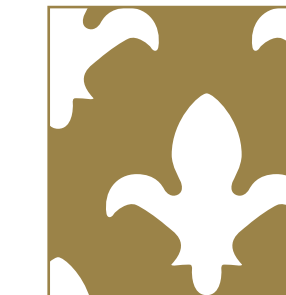
1036



1825



989



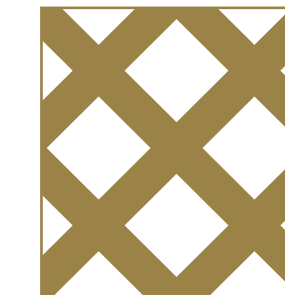
2000



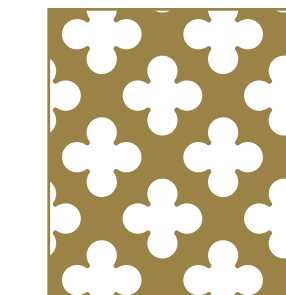
2040



2071



9323



9325



954

PATTERN NAME AND CODE	MATERIAL	THICKNESS (mm)	STOCKED SIZE (mm)
Small Diamond - 9534	MDF	3.0	1830 x 610
Sq. Diamond - 9323	MDF	3.0	1830 x 610
Lattice - 9535	MDF	3.0	1830 x 610
Mini Regency - 9536	MDF	3.0	1830 x 610
Regency - 9537	MDF	3.0	1830 x 610
Filigree - 9538	MDF	3.0	1830 x 610
Roman - 1317	MDF	3.0	1830 x 610
Gothic - 9539	MDF	3.0	1830 x 610
Venus - 9530	MDF	3.0	1830 x 610
Torpedo - 9529	MDF	3.0	1830 x 610
Milan - 9533	MDF	3.0	1830 x 610
Tuscany - 9531	MDF	3.0	1830 x 610

Patterns shown are not to scale.

PATTERN NAME AND CODE	MATERIAL	THICKNESS (mm)	STOCKED SIZE (mm)
Vienna - 9532	MDF	3.0	1830 x 610
Grecian - 9540	MDF	3.0	1830 x 610
Mosaic - 9541	MDF	3.0	1830 x 610
Longton - 9542	MDF	3.0	1830 x 610
Tunis - 2071	MDF	3.0	1830 x 610
Moroccan - 9543	MDF	3.0	1830 x 610
Mini Clover - 9325	MDF	3.0	1830 x 610
Small Clover - 989	MDF	3.0	1830 x 610
Large Clover - 9545	MDF	3.0	1830 x 610

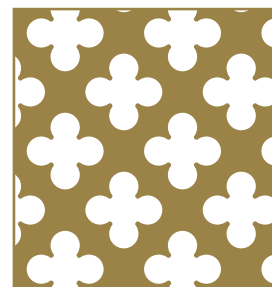
Patterns shown are not to scale.

Single and Double sided laminates/foils are available to order.
White faced board is also available. Minimum order quantity may apply.

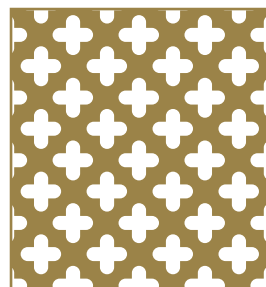
PATTERN NUMBER	THICKNESS (mm)	MATERIAL	STOCKED SIZE (mm)
379	0.7	Brass	1830 x 915
1317	0.7	Brass	1830 x 915
1280	0.7	Brass	1830 x 915
1036	0.7	Brass	2000 x 1000
1825	0.7	Brass	2000 x 1000
989	0.7	Brass	2000 x 1000
2000	0.7	Brass	2000 x 1000
2040	0.7	Brass	2000 x 1000
2071	0.7	Brass	2000 x 1000
9323	0.7	Brass	2000 x 1000
9325	0.7	Brass	2000 x 1000
954	0.7	Brass	2000 x 1000

Patterns shown are not to scale.

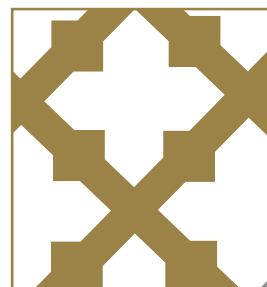
Please note: All brass patterns can be chrome plated on a made to order basis.



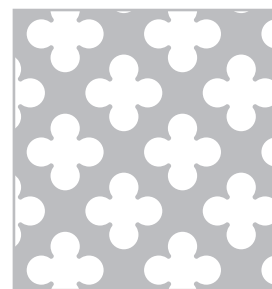
9325
Gold Anodised



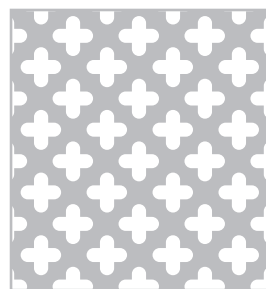
379
Gold Anodised



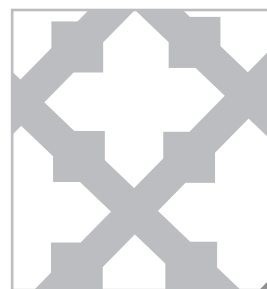
1317
Gold Anodised



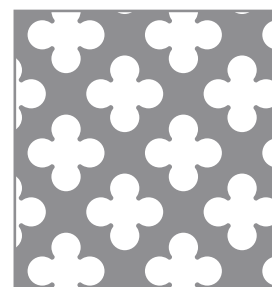
9325
Aluminium



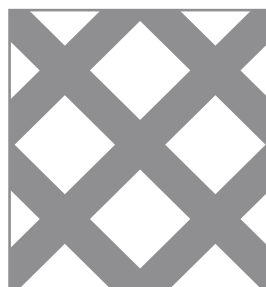
379
Aluminium



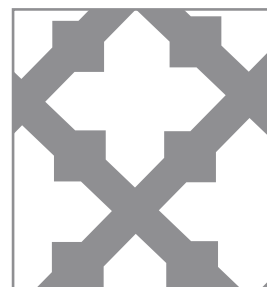
1317
Aluminium



9325
Polished Stainless Steel



9323
Polished Stainless Steel



1317
Polished Stainless Steel

Please note: All polished stainless steel patterns are made to order

PATTERN NUMBER	THICKNESS (mm)	MATERIAL	STOCKED SIZE (mm)
9323	0.5	Polished Stainless Steel	2000 x 1000
9325	0.5	Polished Stainless Steel	2000 x 1000
1317	0.5	Polished Stainless Steel	2000 x 1000
PATTERN NUMBER	THICKNESS (mm)	MATERIAL	STOCKED SIZE (mm)
9325	1.2	Aluminium / Gold Anodised	2000 x 1000
379	1.2	Aluminium / Gold Anodised	2000 x 1000
1317	1.2	Aluminium / Gold Anodised	2000 x 1000

Patterns shown are not to scale.



BS EN ISO 9002
Certificate No. 05390

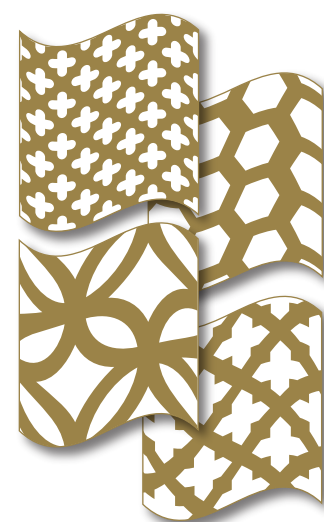
Availability • Quality • Service • Experience

APW Ltd are a major manufacturer of perforated products. Our decorative perforated stock range includes a variety of patterns, materials and sheet sizes. All stock sheets are available for immediate delivery providing you with an efficient, high quality service.

How to Order / Request a Quotation

1. Choose the pattern(s) of your choice.
2. Decide on the quantity you require.
3. Choose a material and any additional finish.
4. Send your enquiry to the stock sales team.

Fax: 01925 295588
Email: sales@apw.co.uk
Tel: 01925 295577



Decorative Stock Range

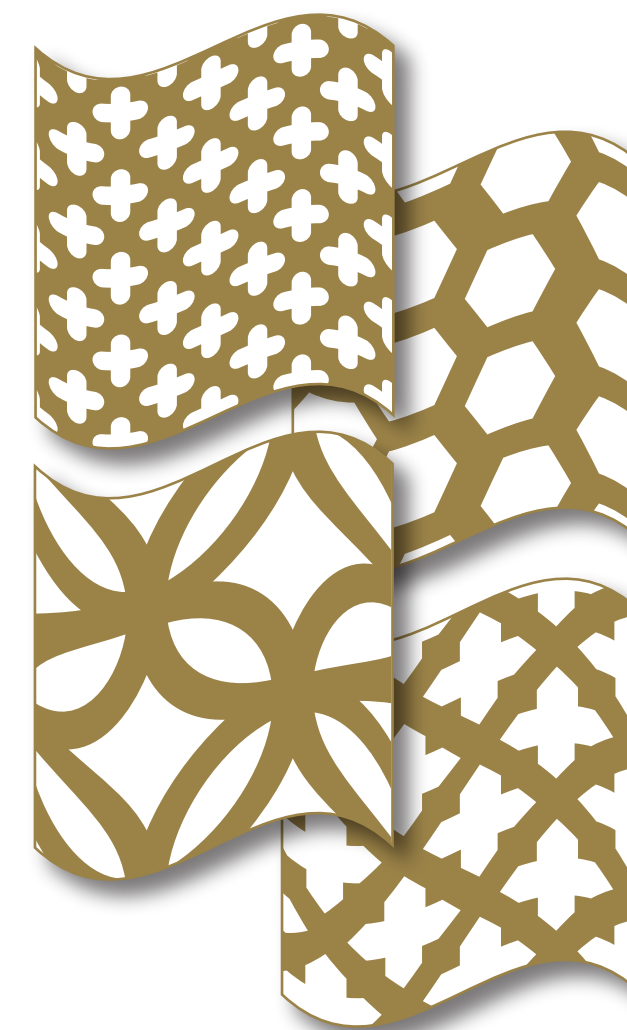


Unit 12 Deacon Trading Estate
Earle Street
Newton le Willows
Merseyside WA12 9XD

Tel: 01925 295577
Fax: 01925 295588
Email: sales@apw.co.uk
www.apw.co.uk

APW reserve the right to amend the stock range and specifications without prior notice

Uniclass L66:N171	EPIC F52:Y141
CJ/SIB	R (G7)



Decorative Stock Range